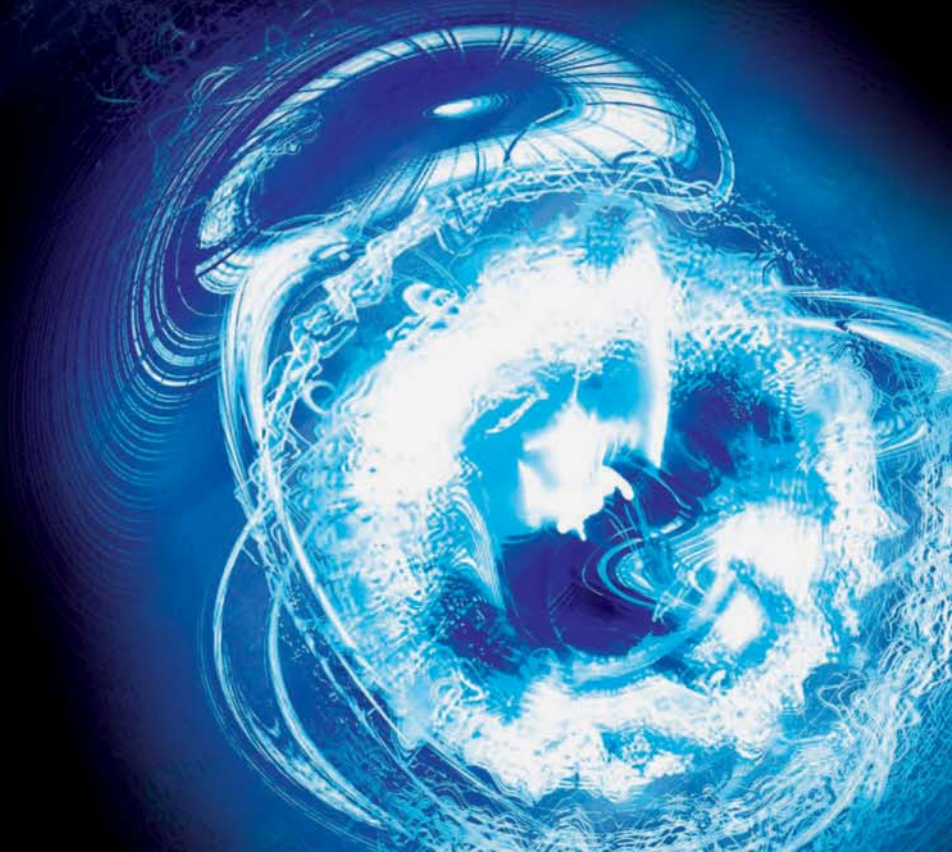




NXS Mobile Audio Product Catalog



ART OR SCIENCE?

Some say 'car audio tuning is an ART'!

At NXS Mobile Audio we strive to provide some of the latest technology tools that make the quest for 'the perfect tune' so much easier.

Our goal was a technologically advanced amplifier completely adjustable to the acoustics of each vehicle. To accomplish this task, each amplifier in the NXS range comes complete with its own built-in Digital Signal Processor (DSP). The DSP allows for the control and adjustment of sophisticated features previously found only in mid to high-end dedicated pre-amplifier equipment.

Each NXS amplifier features unique DSP NetLink digital connections that allow networking of multiple amplifiers via standard RJ11 phone cable using proprietary technology.



System Setup

With NXS Amplifiers you have three distinct options when setting up and controlling the system:

Option #1:

Have the retailer install the amplifier and make all the adjustments for you. Through the use of the DSP technology and DSP Netlink connection, the retailer can adjust and bring your system to its full potential. (Installation and setup fees may apply, please consult your retailer for details.)

Option #2:

Purchase the separate NXLI laptop interface to connect your PC to the amplifier to make *software-based adjustments. This option gives you full real-time adjustability of the amplifier in the comfort of your vehicle.

Digital Signal Processor



At the heart of every NXS Amplifier is a unique chipset that houses the Digital Signal Processor (DSP). Together with optional NXCS software and NXLI PC interface, users can:

- Control up to 8 bands of Parametric Equalization
- Choose between Butterworth, Bessel or Linkwitz-Riley Crossovers, all with adjustable filter slopes.
- Adjust individual channel Gains, Attenuation and Tone.
- Have the flexibility of saving their optimized configurations into the EEPROMS on the amp and computer files on the PC. This means that users across the globe can share tuning configurations via email attachments!
- With the NXCS software and easy to use Graphical User Interface, real time tuning with NXS puts you truly in the drivers' seat.

Option #3:

Gives you more hands-on control by purchasing NXLCDC in-dash controller. Basic adjustments like Sub Level, EQ and Crossover settings can be done in-car using the NXLCDC with continuous control. The DIN size controller with in-dash mounting allows for hands-on adjustments and instant access to 4 programmable memory settings. Additionally, a mini USB connection is provided allowing for connection to your PC to take full advantage of the additional *software based features.

The advantage of these control options are obvious, installers and car audio aficionados can now enjoy tuning their systems in the comfort of the car without having to run to the trunk to make adjustments and then returning to the cabin to listen to the changes they've made.

*NXCS software is included with the purchase of the NXLCDC



TAKE CONTROL

NXLCDC - DSP Controller



The NXLCDC is an optional in-dash controller for users who do not want to use a PC to setup and control their NXS Amplifiers. Shaped in a convenient DIN size, the NXLCDC features a 4 line LCD Display, a function selecting scroll wheel, 4 preset buttons and a 'back' button. This enables the user to select and adjust different amplifiers connected via DSP Netlink in the same car. Basic settings like EQ, Gain, Sub-woofer level and Crossover can be selected and adjusted.

The 4 presets on the NXLCDC can be programmed to recall up to 4 individual configurations saved to the NXLCDC. The user can easily toggle configurations biased toward 'classical' vs. 'techno' music for instance.

There is also a Mini-USB PC computer input connection at the front of the controller. This is to allow PCs with the NXCS software installed the convenience of connecting and controlling the amps through the LCDC instead of having to run additional cables.

NXLI - PC Laptop Interface

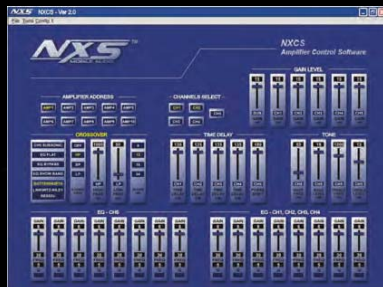
The NXLI is an optional control interface that allows the amplifier's DSP to be controlled by a PC. The NXLI provides a standard USB plug to connect to a PC and a RJ11 socket for a cable connection to the Amplifier's DSP Netlink. The NXLI is powered by the USB connection eliminating the need for additional power connections. This makes the NXLI portable and simple to connect.

Unlike traditional amplifier installations with the adjustments made on the amplifier in the back of the car, the NXLI gives the flexibility to position a Laptop PC within the vehicle while sitting in the listening position making the adjustments real-time. This allows for ideal calibration of the system including equalization and time delay.



NXCS - Amplifier Control Software

The NXCS software is used with a PC and the NXLCDC or NXLI to control the basic and advanced functions of the amplifier.



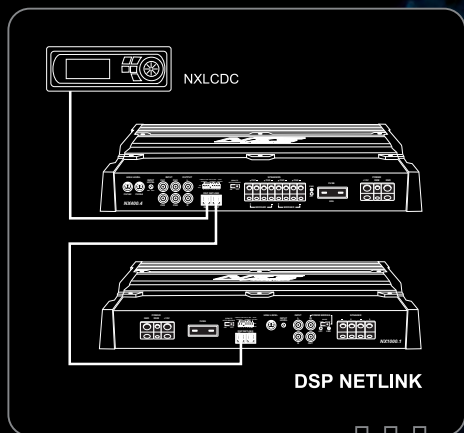
NXCS NXControl Software - Graphic User Interface



INTELLIGENT CONNECTIONS

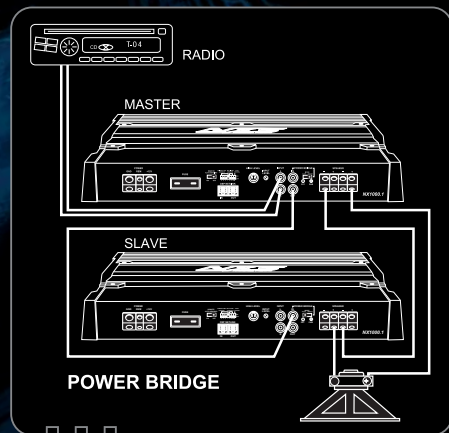
DSP Netlink

Adjustments of multiple amplifiers are made simple with NXS' proprietary DSP Netlink system. Installation friendly RJ11 6 pin telephone cables make networking the amplifiers a breeze. You can control up to 16 amplifiers with the NXLCDC in-dash controller or using a NXLI and PC with NXCS control software. Amplifier addressing is controlled by dip switches located at the front panel of every amplifier and once the amplifier's address is set, users can choose which amp they want to setup/adjust/control via the in-dash controller or PC.



Power Bridge

Have need for more power? The NXS Power Bridge is intended for the serious car audio SPL competitor. The power bridge circuit on the NX1000.1 allows you to combine the power of two like models into one speaker load. For example you can combine the power of two NX1000.1's into a speaker load of 2 ohms for a staggering 2,000 Watts of total output power!



Model	NX200.2	NX400.2	NX400.4
Circuitry	Class A/B	Class A/B	Class A/B
Power @ 4 Ohm	70W x 2	125W x 2	70W x 4
Power @ 2 Ohm	100W x 2	200W x 2	100W x 4
Power @ 1 Ohm	-	-	-
Digital Signal Processor	Yes	Yes	Yes
High Level Inputs	320mV ~10V	320mV ~10V	320mV ~10V
Remote Auto Sensing	Yes	Yes	Yes
Low Level Inputs	200mV ~6V	200mV ~6V	200mV ~6V
Auto Select RCA Input	N/A	N/A	2 or 4 CH Input
Power Bridge Capability	-	-	-
DSP Netlink Capability	Yes	Yes	Yes
Protection Circuitry	Yes	Yes	Yes
Size MM (W x D x H)	238 x 219 x 64	388 x 219 x 64	388 x 219 x 64

CONTROLLED POWER

DSP Capability

DSP
NETLINK



DSP Capability When Controlled by Optional NXLCDC

- Sub Level Control
- Amplifier Address Selection
- Gain Level Adjustment
- Crossover Adjustments:
 - Filter Type:
 - ◆ Low Pass / Band Pass/ High Pass
 - Crossover Slope:
 - ◆ 12dB / 24 dB
- 8 Bands of Equalization per Channel:
 - Frequency Adjustment
 - Level Adjustment
 - EQ Bypass
- Phase
 - 0 to 180 degrees
- 4 Memory EPROM Storage

□ □ □ □

Additional DSP Capability when connected to PC with NXCS Software via NXLCDC or NXLI

- Amplifier Address Selection
- Individual or Paired Channels Selection
- Sub Level Control
- Gain Level Adjustment
- Crossover Adjustments:
 - Filter Technology:
 - ◆ Butterworth
 - ◆ Linkwitz – Riley
 - ◆ Bessel
 - Filter Type:
 - ◆ Low Pass / Band Pass / High Pass
 - Crossover Slope:
 - ◆ 6 dB /12dB / 18dB / 24 dB
- Time Delay:
 - 2, 4 & 5 Channel Amp Models
- Tone Adjustment Include:
 - Bass Center Frequency
 - Bass Level Control
 - Treble Center Frequency
 - Treble Level Control
- 8 Bands of Equalization per Channel:
 - Frequency Adjustment
 - "Q" Adjustment
 - Level Adjustment
 - EQ Bypass
- Phase
 - 0 to 180 degrees
- Individual File Storage for Settings



NX1000.1



NX400.4

	NX900.5	NX500.1	NX1000.1	
	Class A/B + D	Class D	Class D	
	70W x 4 + 300W x 1	300W x 1	500W x 1	
	100W x 4 + 500W x 1	500W x 1	800W x 1	
	-	-	1000W x 1	
	Yes	Yes	Yes	
	320mV ~10V	320mV ~10V	320mV ~10V	
	Yes	Yes	Yes	
	200mV ~6V	200mV ~6V	200mV ~6V	
	2, 4 or 6 CH Input	N/A	N/A	
	-	-	Yes	
	Yes	Yes	Yes	
	Yes	Yes	Yes	
	488 x 219 x 64	288 x 219 x 64	388 x 219 x 64	

NXS
MOBILE AUDIO

Coaxial and Triaxial Speakers

NXS speakers are designed to bring your system to its full potential. Speakers that deliver competition grade sound quality with unsurpassed performance and power handling. The foundation of the speaker design is the unique proprietary wrap around frame. The State-of-the-art cold steel textured frame houses the motor assembly for maximum strength and stability with the benefit of low resonance. The heart of the speaker is a high temperature Kapton former wound with two precision layers of Polyesterimicle Enameled copper wire intended not only for power handling but sound quality as well. Sintered Ferrite magnets help to couple the power and efficiency of the motor. To minimize distortion the drivers are made with precision injected cones complemented by high-grade butyl rubber surrounds and Conex spiders. Neodymium 19mm swivel mount tweeters with aluminum domes complete the speakers with high efficiency and superb sound quality.

□ □ □



NX552



NX652



NX572



NX693

Model	NX552	NX652	NX572	NX693
Size	5.25"	6.5"	5x7"/ 6x8"	6 x 9"
Type	2-Way	2-Way	2-Way	3-Way
Frequency Response	65Hz - 22kHz	55Hz - 22kHz	55Hz - 22kHz	45Hz - 22kHz
Magnet Size	12 oz.	15 oz.	15 oz.	30 oz
Peak Input Power	150W	150W	150W	300W
Continuous Input Power	75W RMS	75W RMS	75W RMS	150W RMS
Sensitivity	87dB	89dB	90dB	92dB
Impedance	4 Ohm	4 Ohm	4 Ohm	4 Ohm

TIGHT BASS

Component Speakers

The component speakers take sound reproduction to the next level. With the stereophile in mind, all materials have been carefully selected and are designed to deliver the most accurate and natural sound possible.

Like the Coaxial speakers, the foundation of the component design is a unique proprietary wrap around frame; however we take it to the next level with the use of an Aluminum Die Cast frame. For added performance the motor assembly features a vented extended back plate which allows for a long throw design and cool operation. The balanced injected cones are complemented by high-grade butyl rubber surrounds and Conex spiders, delivering rich natural sounding midbass.

The 28mm tweeters are constructed from some of the finest materials including neodymium magnet and elliptical Teteron dome. Each set includes a 3-way mounting kit providing flexibility of positioning the tweeter for optimum stereo imaging.

□ □ □

A computer aligned X-over network provides a smooth transition between mid and high frequencies. Three wiring configurations allow the selection -3dB, 0dB or +3 dB of tweeter adjustment.

Model	NX650C
Size	6.5" Component
Type	2-Way
Frequency Response	55Hz - 22kHz
Peak Input Power	150W
Continuous Input Power	75W RMS
Crossover	12dB
Sensitivity	91dB
Impedance	4 Ohm



NX650C

Woofers

The NXS woofers deliver hard hitting bass; the NX10 and NX12 feature 40 oz magnets 2" Kapton voice coils and injection cone with rubber surrounds. For added performance the NX10D and NX12D feature die cast frames, Aluminum voice coils and long throw design.



NX12

NX12D

□ □ □ □

Model	NX10	NX12	NX10D	NX12D
Size	10"	12"	10"	12"
Frequency Response	20Hz - 500Hz	20Hz - 500Hz	20Hz - 500Hz	20Hz - 500Hz
Magnet Size	40 oz.	40 oz.	80 oz.	80 oz.
Voice Coil Diameter	2"	2"	2"	2.5"
Peak Input Power	500W	500W	700W	800W
Continuous Input Power	250W RMS	250W RMS	350W RMS	400W RMS
Sensitivity	87dB	89dB	86dB	88dB
Impedance	Dual 4 Ohm	Dual 4 Ohm	Dual 4 Ohm	Dual 4 Ohm



TAKE CONTROL



18305 E. Valley Blvd. Unit A • La Puente • CA 91744 • USA

Phone: (+1) 626-921-4686 • Fax (+1) 626-913-0183

E-Mail: sales@nxsmobileaudio.com • Web: www.nxsmobileaudio.com

Your NXS Dealer:

Due to continuing product improvements, design and specifications subject to change without notice.